



presents:

A step-by-step guide to cataloging **parts** in

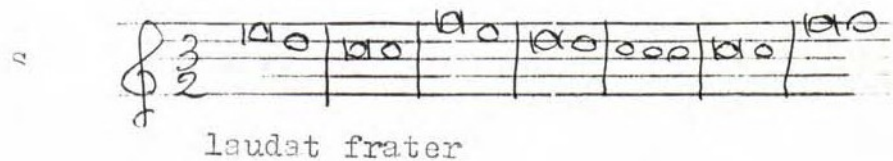


This guide will show you how to enter a source if you only have **parts**.

Let's use this card:

(RISM ID no. 859000529)

ANONIMO I-Bsf, M.A.II.6
[Inno, Decus umorum, 3 v., coro, Do]
Inno
MS, fine 18 sec., **parti**, 24x17,5 cm.
7 parti: S, A, T (soli), S, A, T, B (coro)
1, 2, 1, 4, 4, 4, 4 f.



ANONIMO [Inno, Decus umorum, 3 v., coro, Do]
I-Bsf, M.A.II.6

The required fields are similar to the required fields when you have only a score.

The difference is we have 7 parts: 3 solo voices and 4 chorus voices.



To catalog this source, these are the fields you need at a minimum:

Library information and relations

- Library siglum and shelfmark (852)

People and institutions

- Composer (100)

Title and content description

- Title on source (245)
- Standardized title, scoring summary, key (240)
- Subject heading (650)
- Total scoring (594)
- Language code (041)

Material description

- Source type (593)
- Date (260)
- **Physical description (300)**
- **Parts held and extent (590)**

Incipits (031)

- Tempo
- Music incipits
- Text incipits

References and notes

Administration

Fill out all of the sections the same as for scores, except for the **Material description**.

If you haven't viewed the guide for scores yet, take a look at it now!

<https://rism.info/community/muscat/tutorials.html>

OK? Now let's catalog our parts!

Material description (1/2)

ANONIMO I-Bsf, M.A.II.6
[Inno, Decus umorum, 3 v., coro, Do]
Inno
MS, fine 18 sec., parti, 24x17,5 cm.
7 parti: S, A, T (soli), S, A, T, B (coro)
1, 2, 1, 4, 4, 4, 4 f.

Source type (593): Select the Source type and the Content type from the list (same as for scores)

Publishing, Printing, and Production Information --> Date (260):

- Enter the dating of this manuscript (end of the 18th century) according to RISM conventions (same as for scores)

Physical description (300): Enter 7 parts and the dimensions

Material description	
SOURCE TYPE (593)	
Source type	Manuscript copy
Content type	Notated music
PUBLISHING, PRINTING AND PRODUCTION INFORMATION (260)	
Place	
Publisher, copyist	
Date	1790-1799
Location of printer	
Name of printer	
PHYSICAL DESCRIPTION (300)	
Format, extent	7 parts
Other physical details	
Dimensions	24 x 17,5 cm

Material description (2/2)

Parts held and extent (590): You have two options:

- Each instrumental group on a separate line
- All parts on one line, instrumental groups separated by semicolon

Do whichever makes sense for the source.

ANONIMO I-Bsf, M.A.II.6
[Inno, Decus umorum, 3 v., coro, Do]
Inno
WS, fine 18 sec., parti, 24x17,5 cm.
7 parti: S, A, T (soli), S, A, T, B (coro)
1, 2, 1, 4, 4, 4, 4 f.

Option 1:

PARTS HELD AND EXTENT (590)		? + -
Parts held	Solo: S, A, T	
Extent (parts)	1, 2, 1 f.	
Parts held	Coro: S, A, T, B	
Extent (parts)	4, 4, 4, 4 f	

Option 2:

PARTS HELD AND EXTENT (590)		? + -
Parts held	Solo: S, A, T, Coro: S, A, T, B	
Extent (parts)	1, 2, 1, 4, 4, 4, 4 f.	

Summary: Scores vs. Parts All sections are the same except for **Material description**.

In the field **Material description**, fill out:

If you have a score:

Source type (593)

Date (260)

Physical description (300)

- **Format, extent**
- **Dimensions**

PHYSICAL DESCRIPTION (300)	
Format, extent	1 score: 8 f.
Dimensions	16 x 22 cm

If you have a part:

Source type (593)

Date (260)

Physical description (300)

- **Format only**
- **Dimensions**

Parts held and extent (590)

PHYSICAL DESCRIPTION (300)	
Format, extent	7 parts
Dimensions	24 x 17.5 cm

PARTS HELD AND EXTENT (590)	
Parts held	Solo: S, A, T
Extent (parts)	1, 2, 1 f.

Parts held	Coro: S, A, T, B
Extent (parts)	4, 4, 4, 4 f